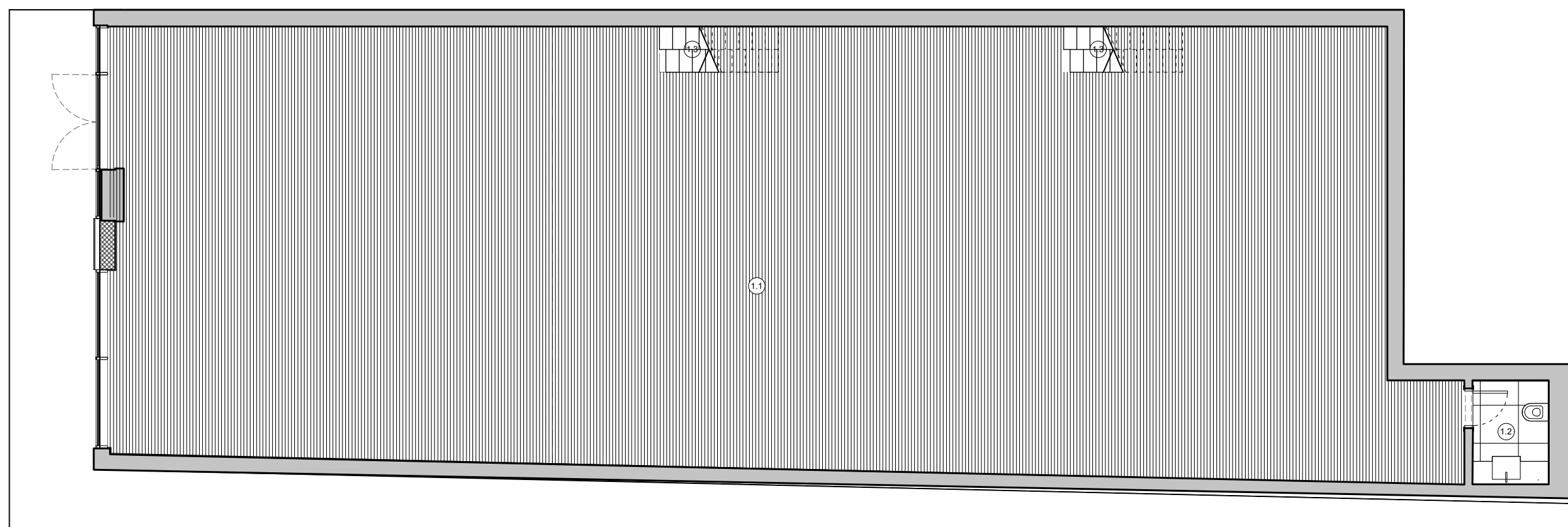
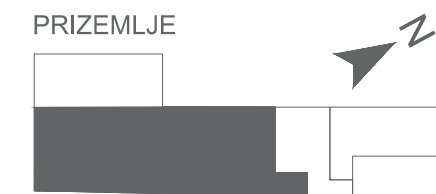


STAMBENO-POSLOVNI OBJEKAT
NA G.P.1, K.O. Batajnica, opština Zemun, Beograd

KATALOG STANOVA

14.04.2025. GODINE

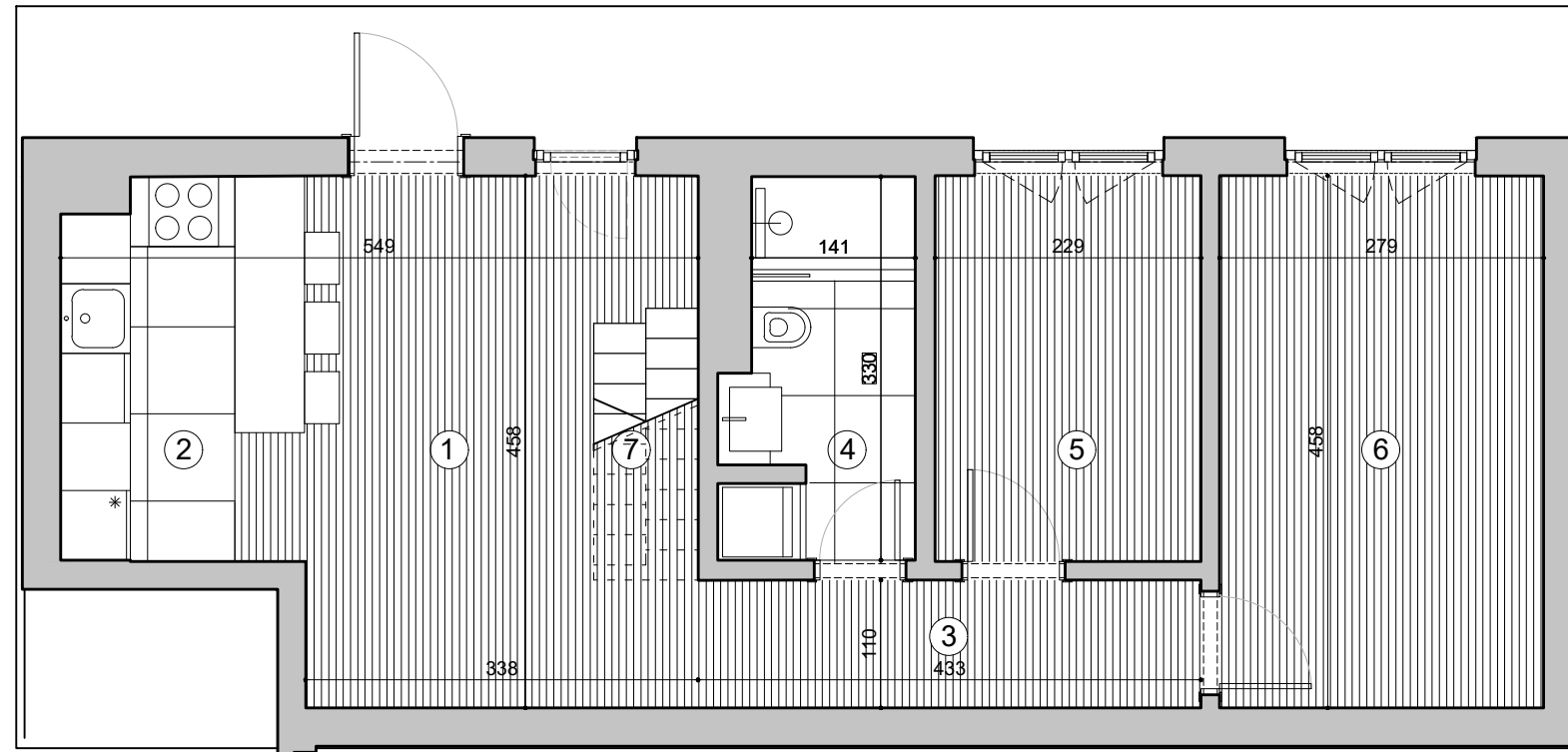
PRIZEMLJE



PRIZEMLJE

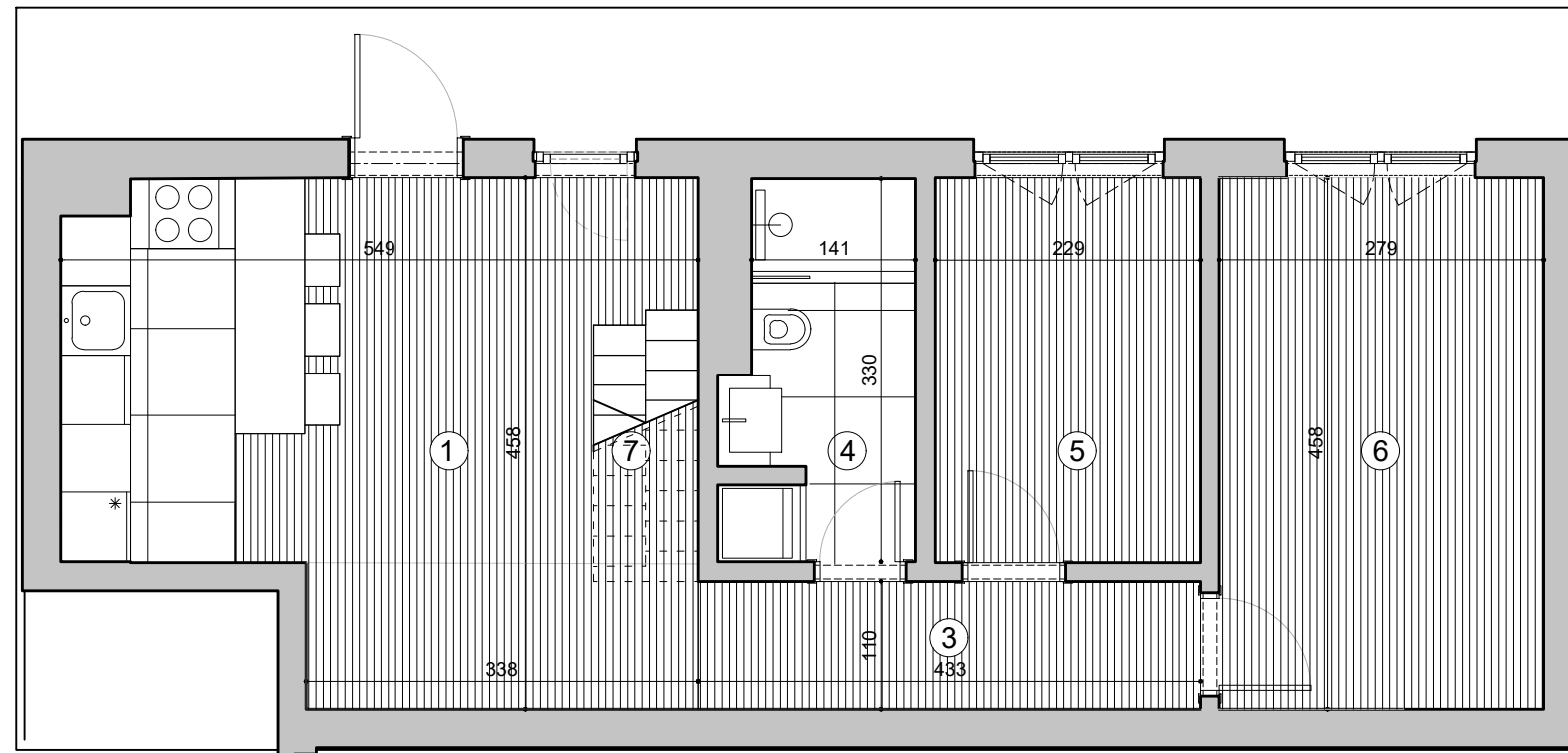
LOKAL		
Lo1.1	Lokal 1	221.87
Lo1.2	Toalet	3.05
Lo1.3	Stepenište	1.99
UKUPNO NETO LOKAL		226.91

PRIZEMLJE

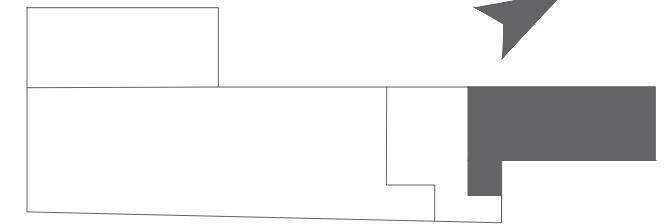


PRIZEMLJE - opcija 1

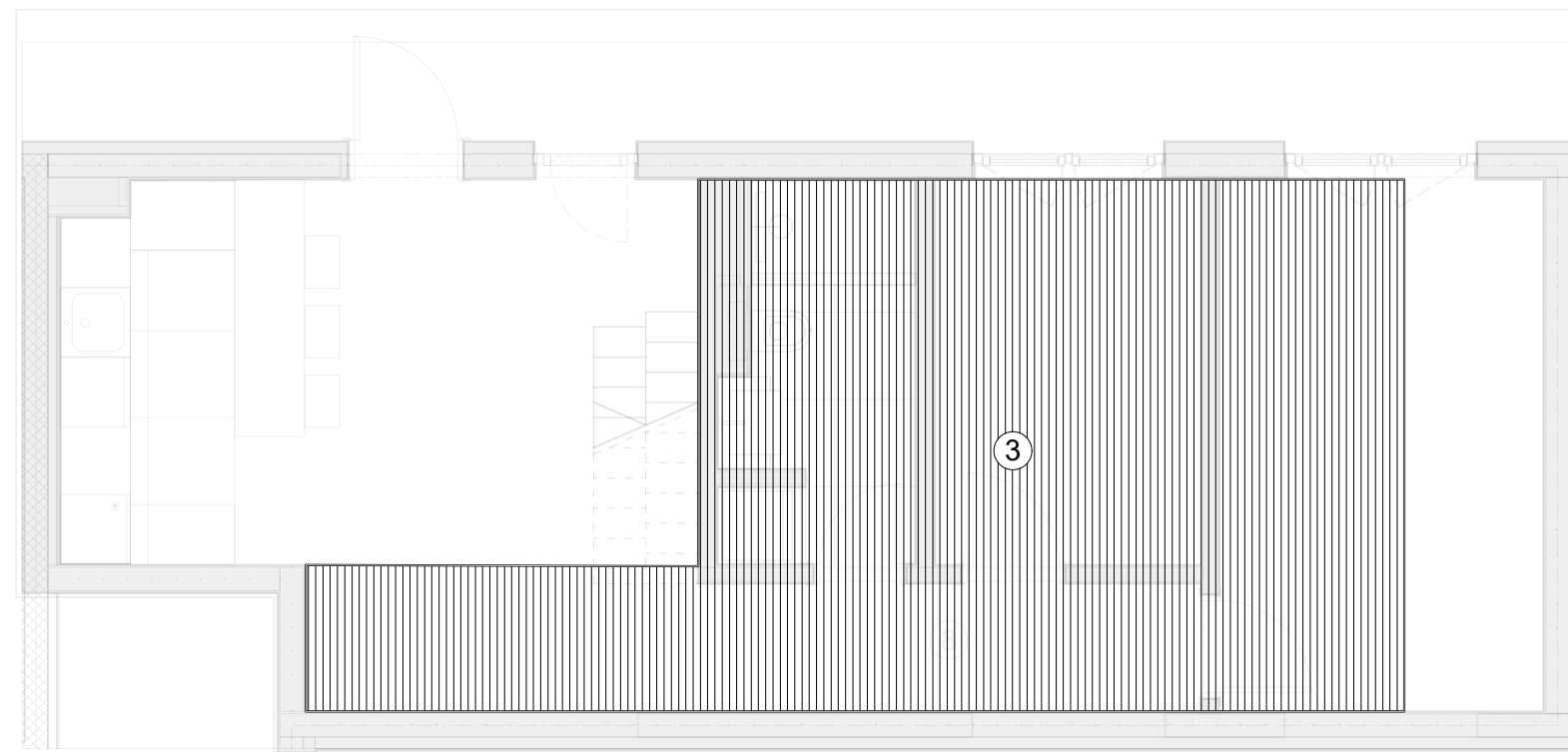
POSLOVNI APARTMAN		
1	Soba sa trpezarijom	17.51
2	Kuhinja	4.77
3	Hodnik	4.76
4	Kupatilo	5.00
5	Soba	7.60
6	Soba	12.78
7	Stepenice	2.05
UKUPNO NETO PRIZEMLJA		54.46



PRIZEMLJE

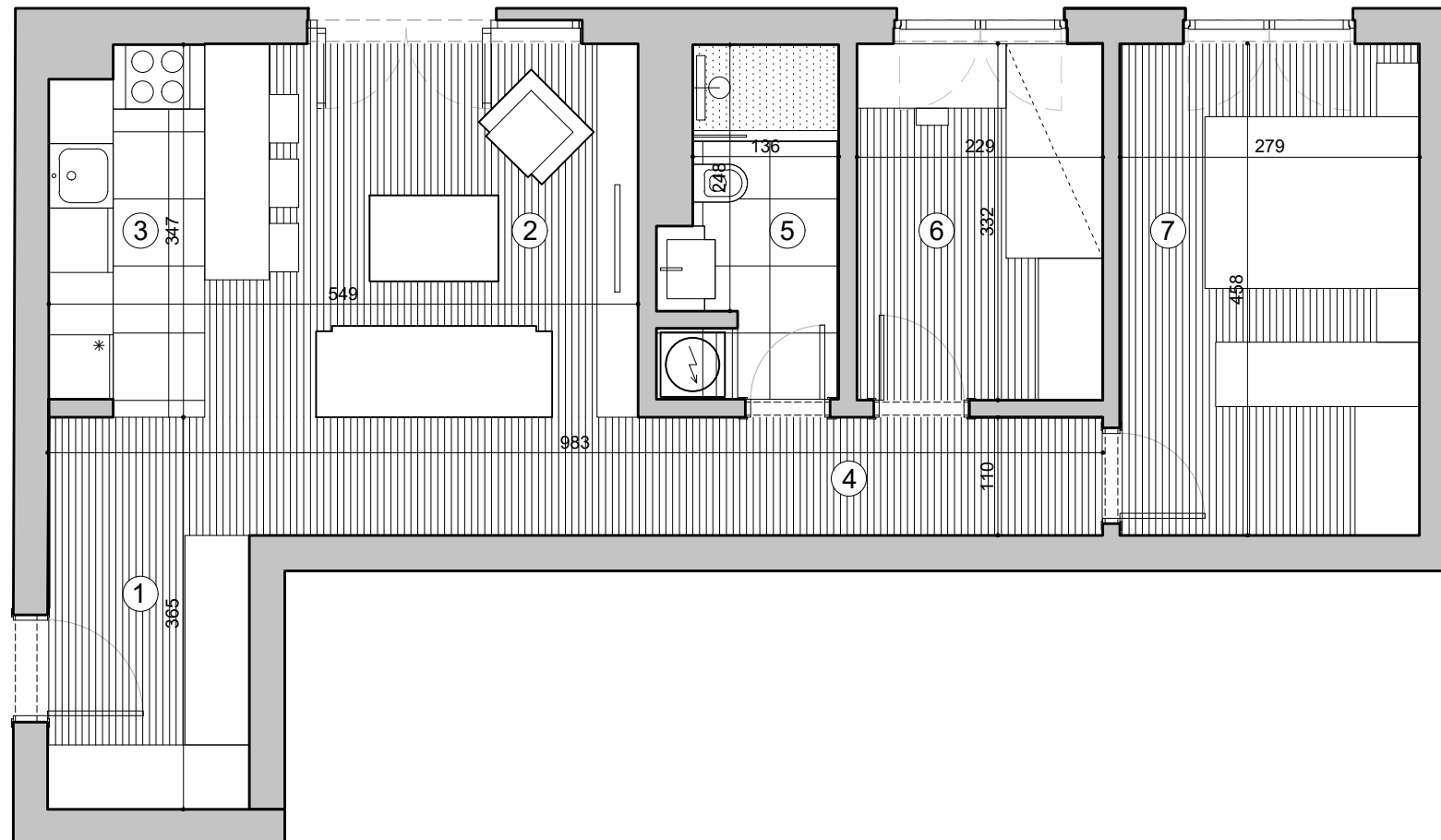
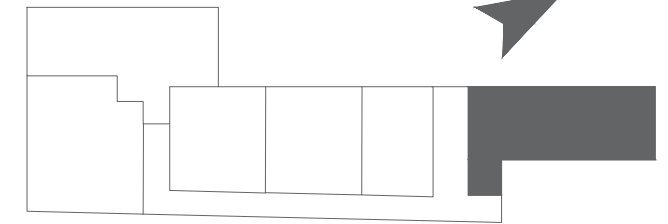


PRIZEMLJE - opcija 2



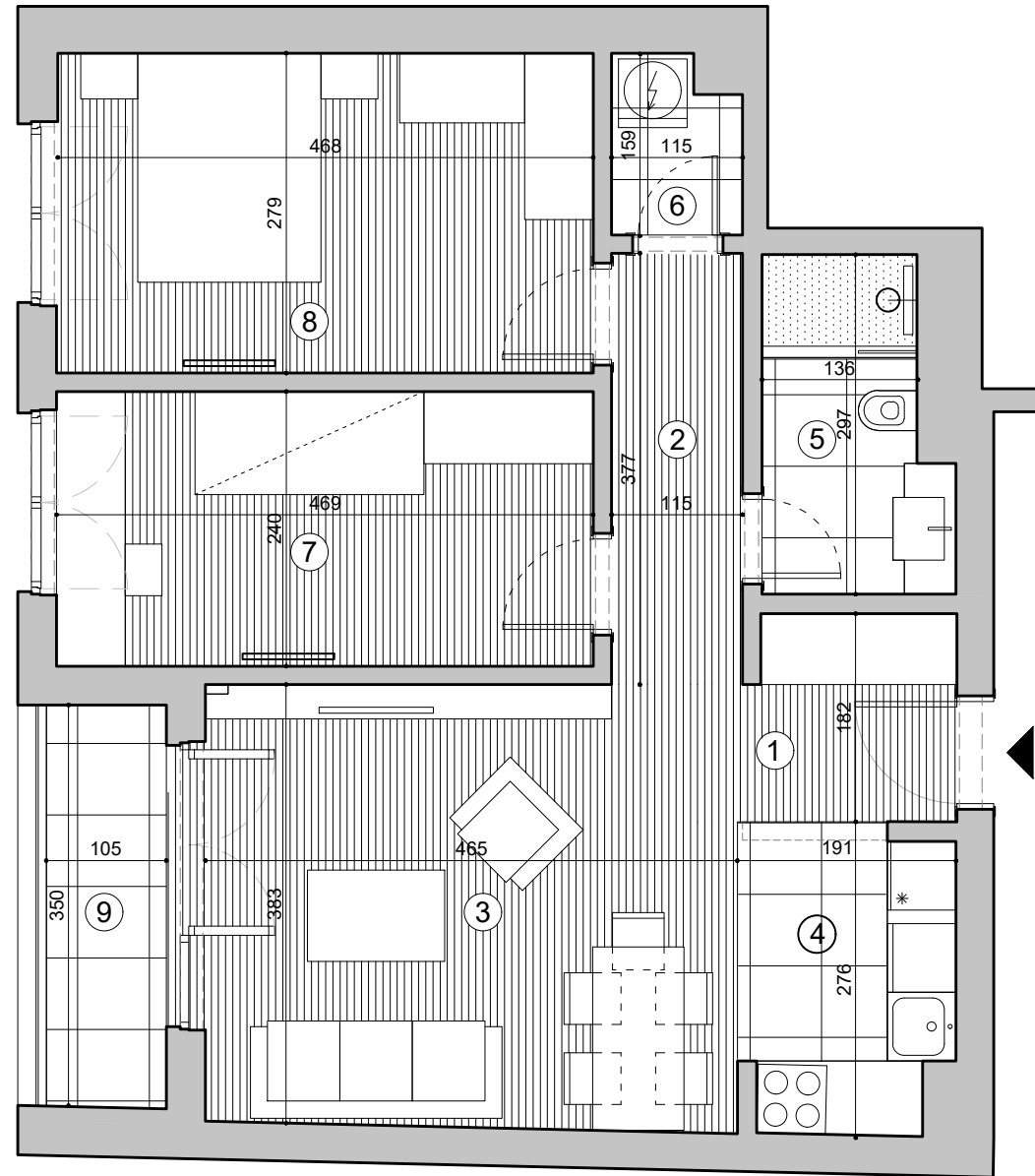
POSLOVNI APARTMAN		
1	Soba sa trpezarijom	17.51
2	Kuhinja	4.77
3	Hodnik	4.76
4	Kupatilo	5.00
5	Soba	7.60
6	Soba	12.78
7	Stepenice	2.05
UKUPNO NETO PRIZEMLJA		54.46
8	Soba - Galerija	32.09
UKUPNO NETO		86.65

1. I 2. SPRAT

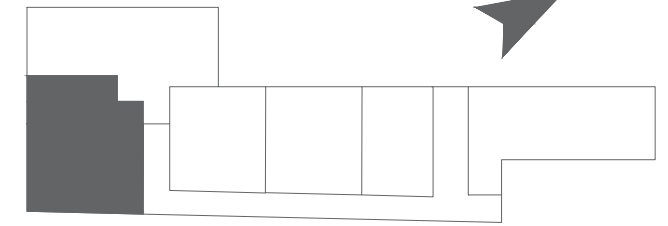


TROSOBAN STAN

Stan br.1 i 7		
1	Ulaz	6.41
2	Dnevna soba sa trpezarijom	18.48
3	Kuhinja	4.75
4	Hodnik	4.76
5	Kupatilo	4.91
6	Spavaća soba	7.60
7	Spavaća soba	12.78
UKUPNO NETO ZATVORENO		59.70
UKUPNO NETO STAN		59.70

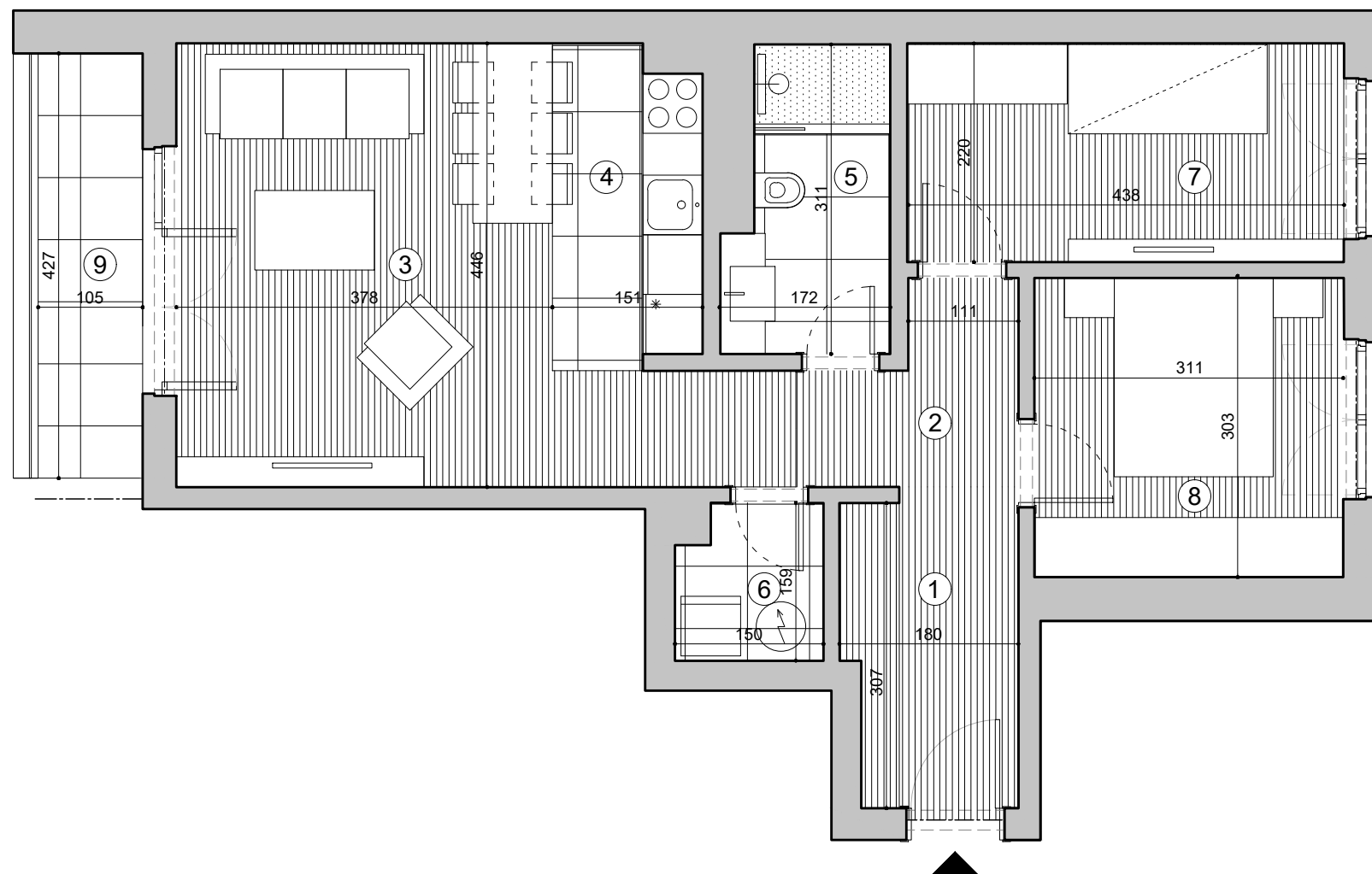


1. I 2. SPRAT

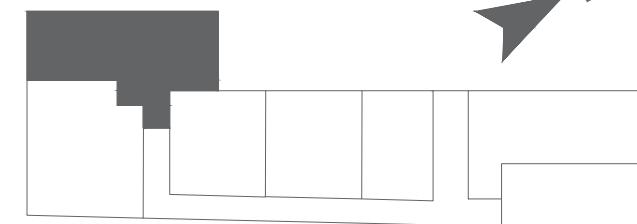


TROSOBAN STAN

Stan br. 2 i 8		
1	Ulaz	4.69
2	Hodnik	4.31
3	Dnevna soba sa trpezarijom	16.67
4	Kuhinja	4.82
5	Kupatilo	4.40
6	Vešernica	1.67
7	Spavaća soba	11.25
8	Spavaća soba	13.09
NETO ZATVORENO		60.91
9	Terasa	3.69
NETO OTVORENO		3.69
UKUPNO NETO STAN		64.60

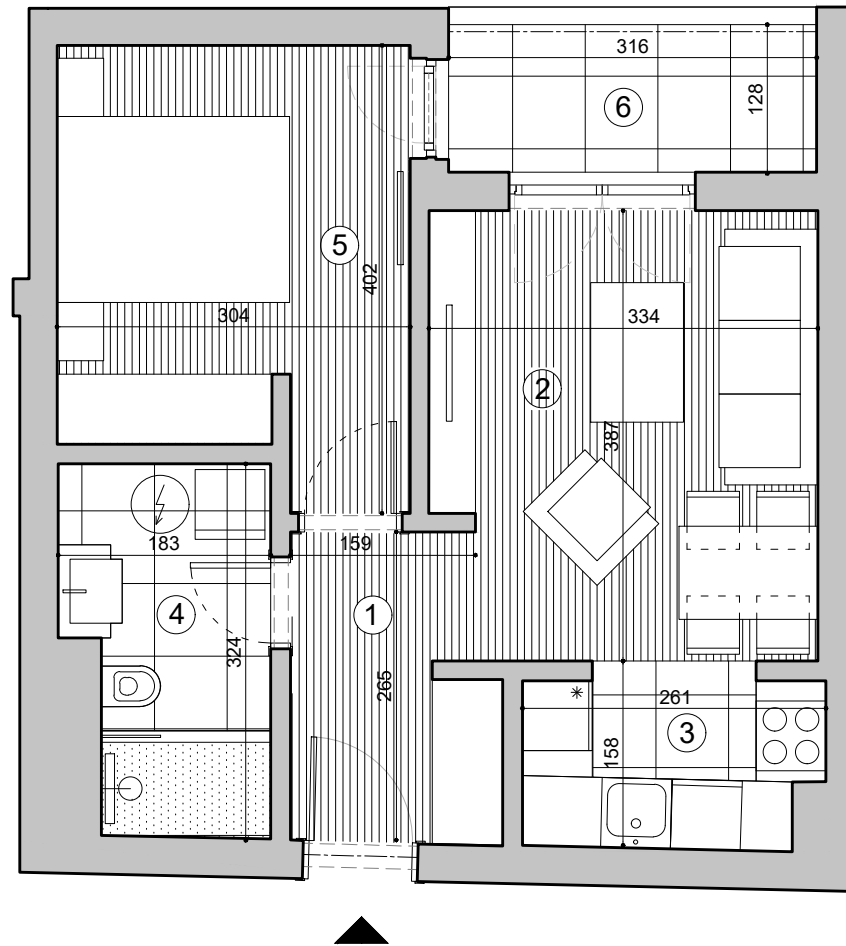


1. I 2. SPRAT

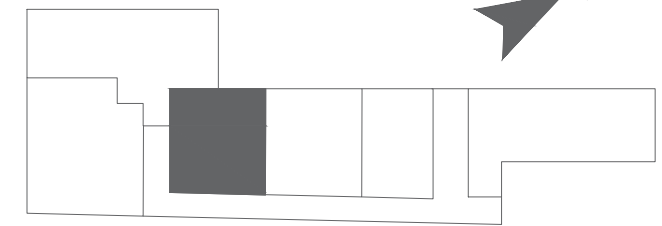


TROSOBAN STAN

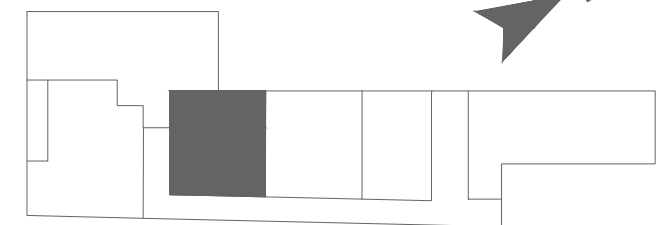
Stan br.3 i 9		
1	Ulaz	5.20
2	Hodnik	5.45
3	Dnevna soba sa trpezarijom	17.95
4	Kuhinja	4.67
5	Kupatilo	4.68
6	Vešernica	2.29
7	Spavaća soba	9.58
8	Spavaća soba	9.35
NETO ZATVORENO		59.17
9	Terasa	4.49
NETO OTVORENO		4.49
UKUPNO NETO STAN		63.66



1. I 2. SPRAT

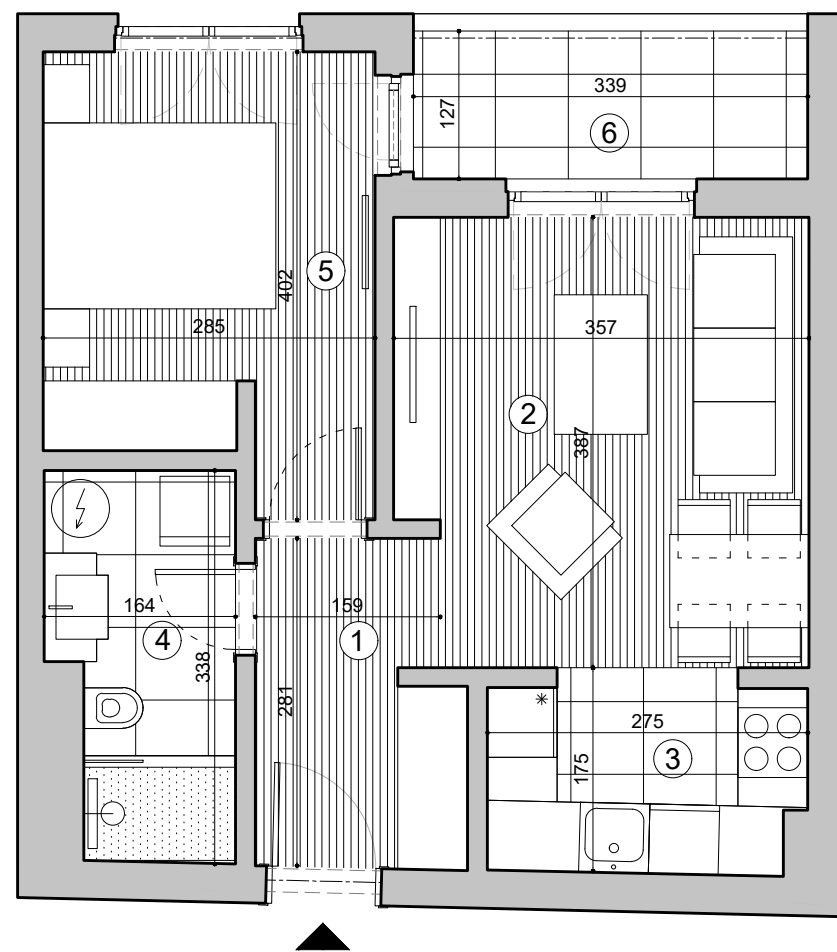


POVUČENI SPRAT

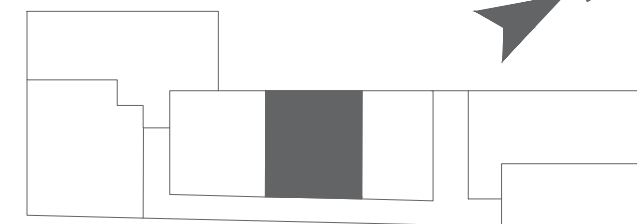


DVOSOBAN STAN

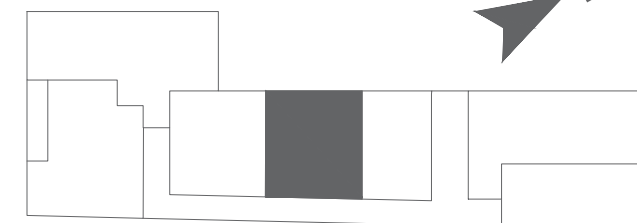
Stan br. 4, 10 i 16		
1	Ulaz	4.52
2	Dnevna soba sa trpezarijom	12.45
3	Kuhinja	3.84
4	Kupatilo	5.23
5	Spavaća soba	10.93
NETO ZATVORENO		36.96
6	Terasa	4.02
NETO OTVORENO		4.02
UKUPNO NETO STAN		40.98



1. I 2. SPRAT

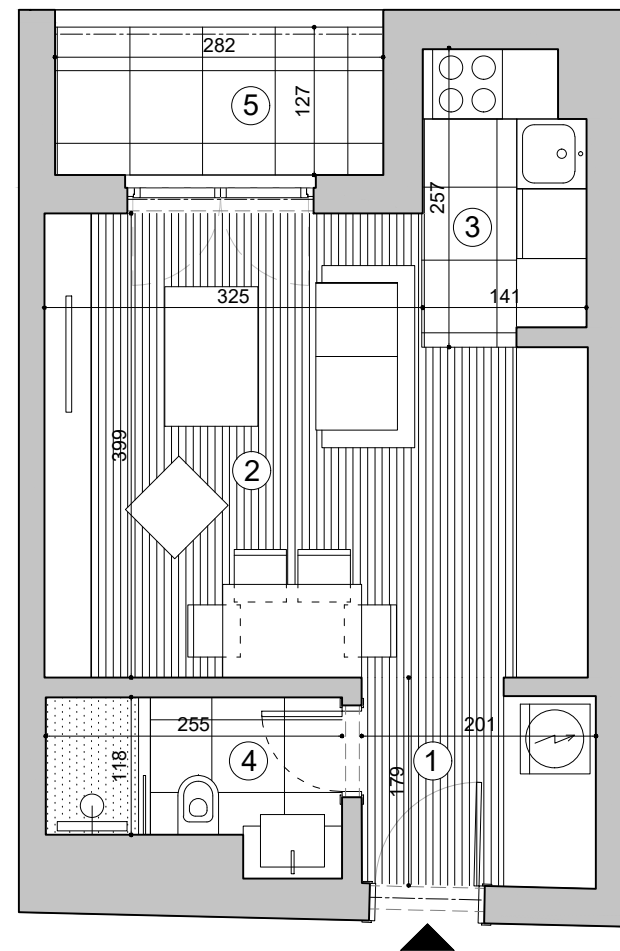


POVUČENI SPRAT

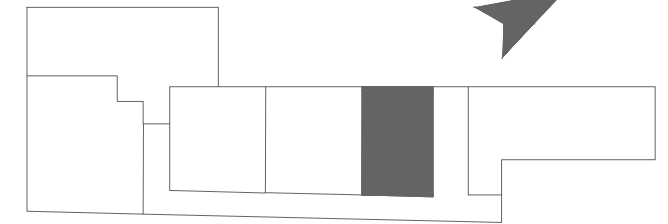


DVOSOBAN STAN

Stan br. 5, 11 i 17		
1	Ulaz	4.82
2	Dnevna soba sa trpezarijom	13.32
3	Kuhinja	4.55
4	Kupatilo	4.95
5	Spavaća soba	10.30
NETO ZATVORENO		37.94
6	Terasa	4.31
NETO OTVORENO		4.31
UKUPNO NETO STAN		42.24



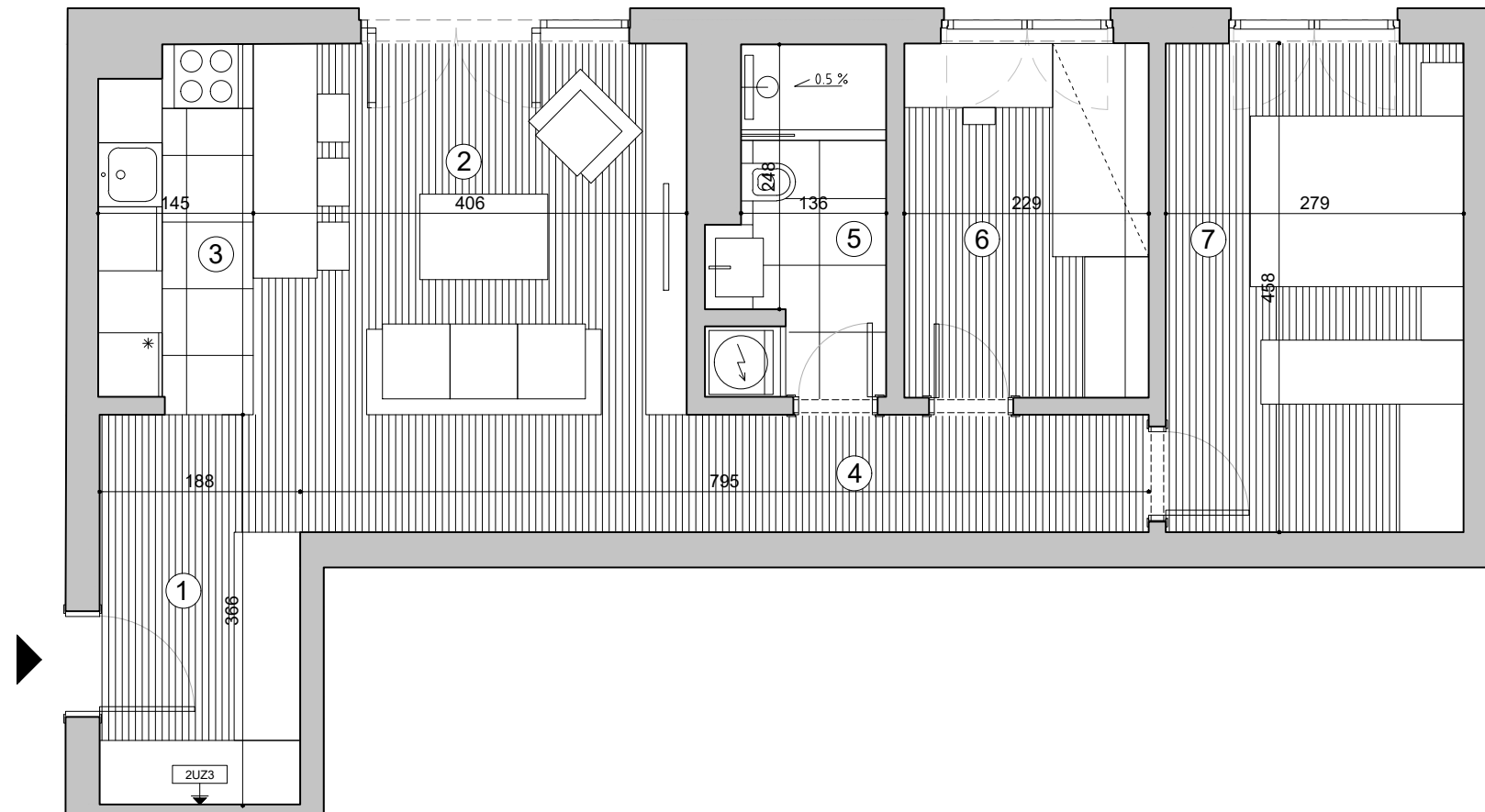
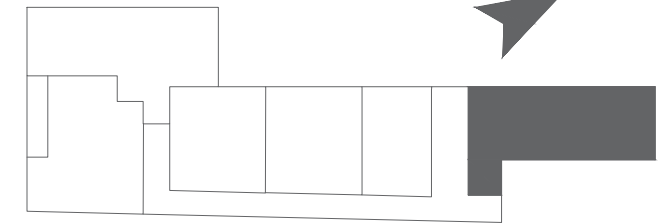
1. I 2. SPRAT



JEDNOSOBAN STAN

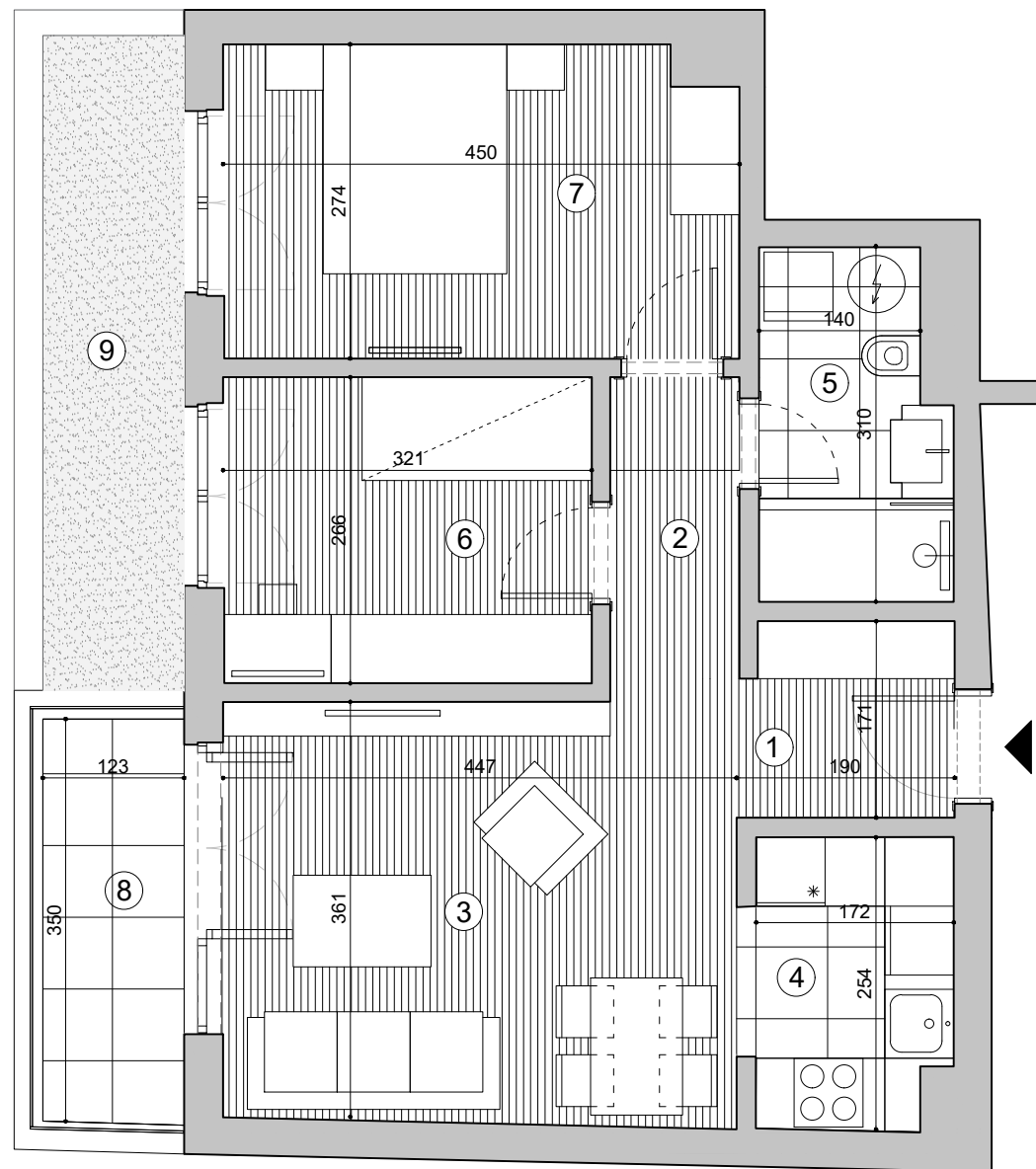
Stan 6 i 12		
1	Ulaz	3.48
2	Dnevna soba sa trpezarijom	17.01
3	Kuhinja	3.36
4	Kupatilo	3.33
NETO ZATVORENO		27.18
5	Terasa	3.59
NETO OTVORENO		3.59
UKUPNO NETO STAN		30.77

POVUČENI SPRAT

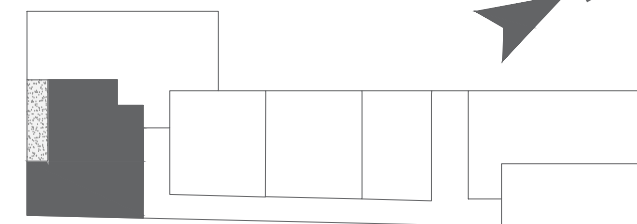


TROSOBAN STAN

Stan br.13		
1	Ulaz	6.41
2	Dnevna soba sa trpezarijom	18.46
3	Kuhinja	4.76
4	Hodnik	4.76
5	Kupatilo	4.91
6	Spavaća soba	7.60
7	Spavaća soba	12.78
NETO ZATVORENO		59.69
UKUPNO NETO STAN		59.69

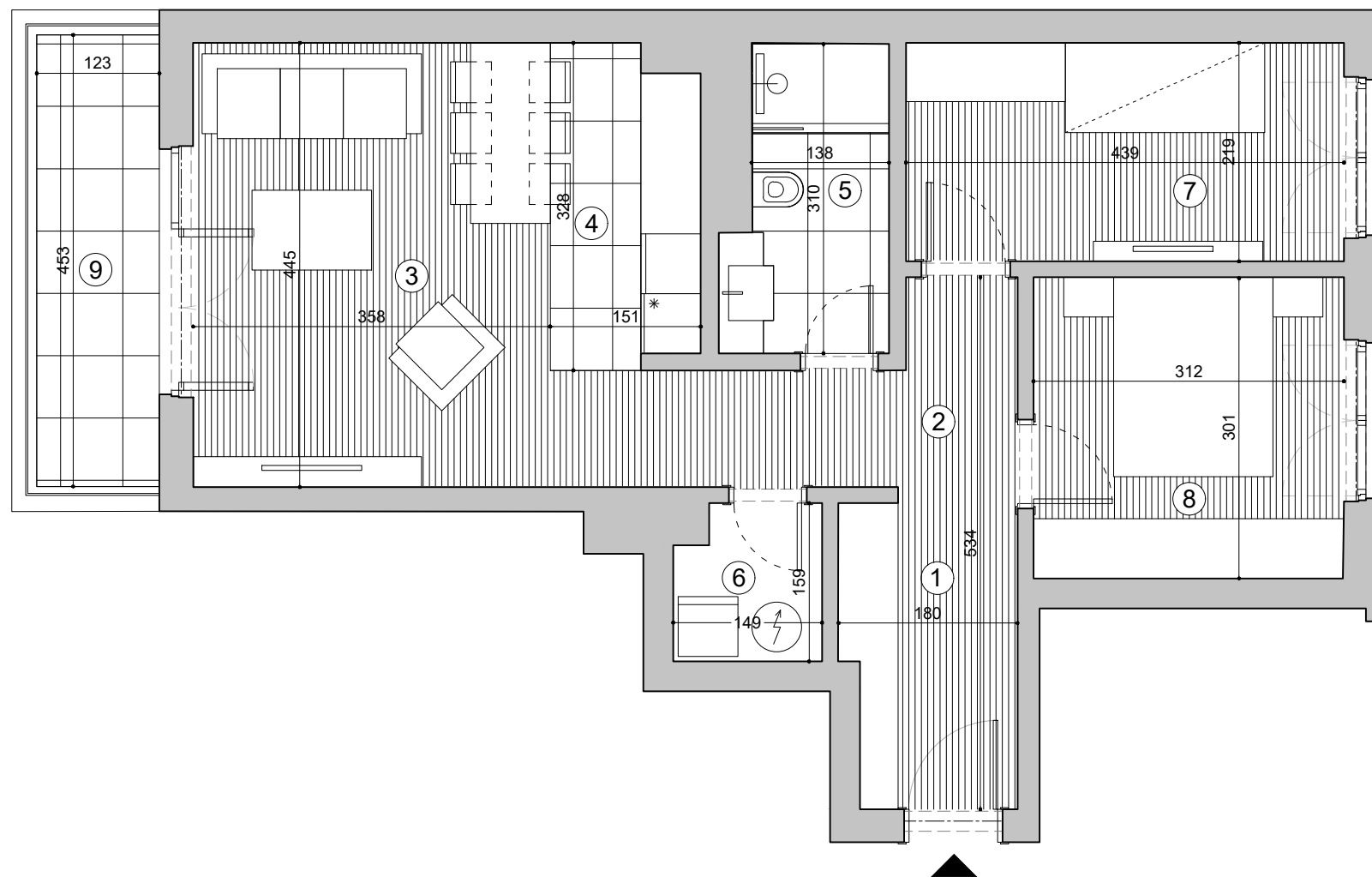


POVUČENI SPRAT

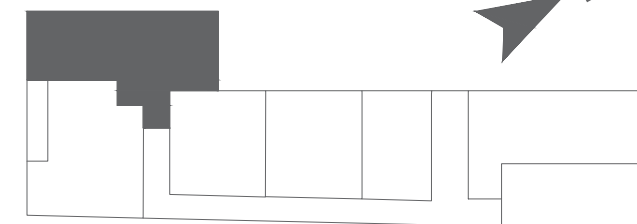


TROSOBAN STAN

Stan br.14		
1	Ulaz	4.49
2	Hodnik	2.95
3	Dnevna soba sa trpezarijom	15.29
4	Kuhinja	4.45
5	Kupatilo	4.83
6	Spavaća soba	8.54
7	Spavaća soba	12.07
NETO ZATVORENO		52.62
8	Terasa	4.33
NETO OTVORENO		4.33
UKUPNO NETO STAN		56.95
9	Pripadajuća terasa	7.00
UKUPNO NETO STAN SA PRIPADAJUĆOM TERASOM		63.95

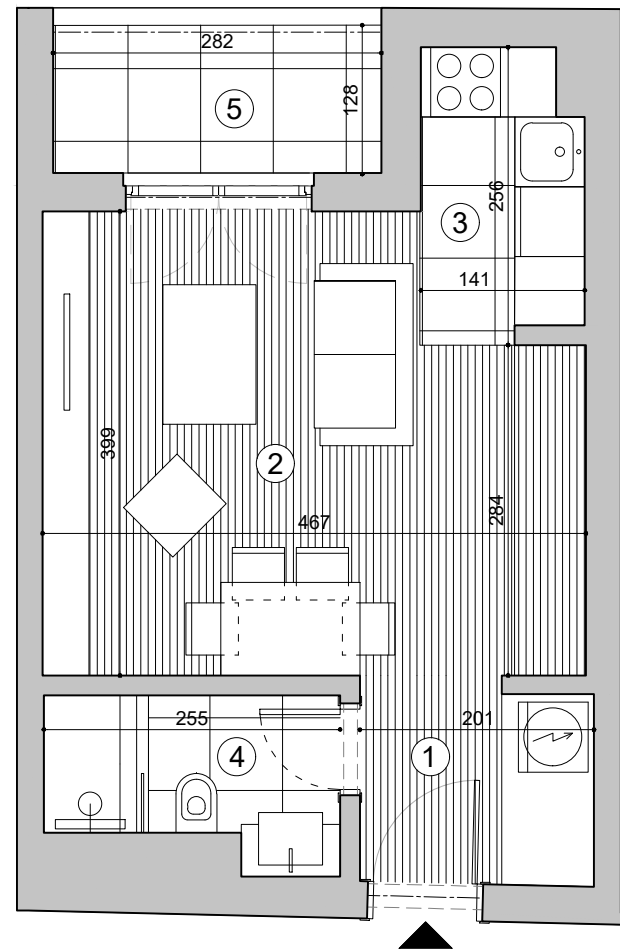


POVUČENI SPRAT

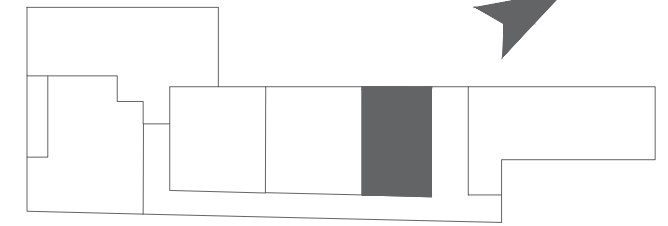


TROSOBAN STAN

Stan br.15		
1	Ulaz	5.20
2	Hodnik	5.44
3	Dnevna soba sa trpezarijom	17.02
4	Kuhinja	4.65
5	Kupatilo	4.66
6	Vešernica	2.22
7	Spavaća soba	9.67
8	Spavaća soba	9.35
NETO ZATVORENO		58.22
9	Terasa	5.57
NETO OTVORENO		5.57
UKUPNO NETO STAN		63.79



POVUČENI SPRAT



JEDNOSOBAN STAN

Stan br.18		
1	Ulaz	3.48
2	Dnevna soba sa trpezarijom	17.01
3	Kuhinja	3.36
4	Kupatilo	3.33
NETO ZATVORENO		27.18
5	Terasa	3.59
NETO OTVORENO		3.59
UKUPNO NETO STAN		30.77